



elighthouse.eu

Newsletter

June 2017



**Northern Periphery and
Arctic Programme**
2014-2020



EUROPEAN UNION

Investing in your future
European Regional Development Fund



What is elighthouse?

“elighthouse” is an EU project, which is co-financed by the European Regional Development Fund (ERDF) through the Northern Periphery & Arctic (NPA) Programme 2014-2020. This project runs from 1st April 2016 to 31st March 2019.

The elighthouse partnership will encourage local and regional organizations to improve their energy efficiency. The elighthouse project will guide communities to further develop their environmental sustainability while also creating new ideas and procedures.

[Read More](#)



Our Network

The elighthouse consortium comprises of 10 partner organisations from 6 Northern Periphery and Arctic Regions: Finland, Sweden, Norway, Ireland, United Kingdom and Greenland. The partnership includes organisations from various disciplines including higher educational institutes, local government authorities and a social enterprise organisation.

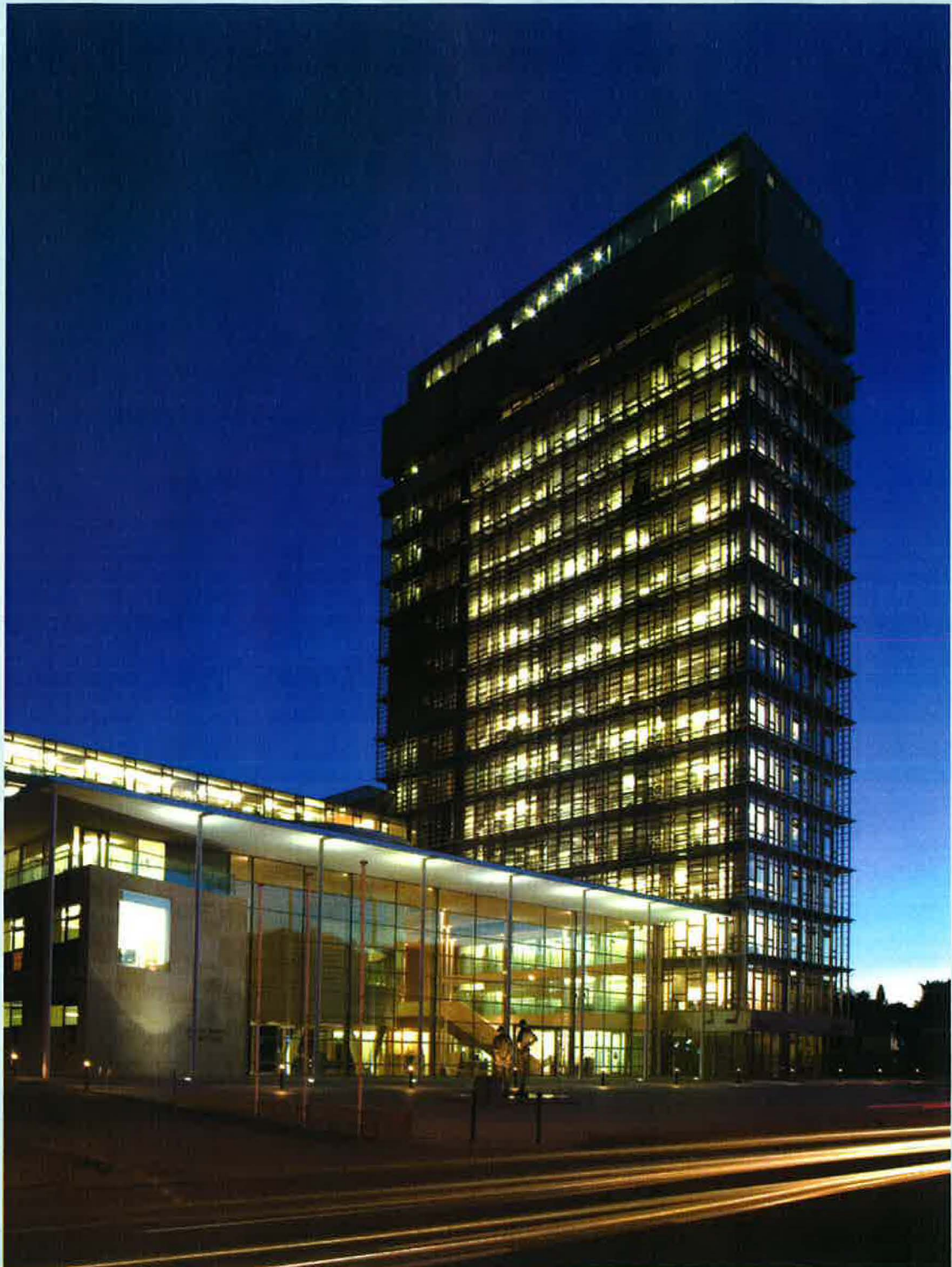
[Read More](#)



Spotlight on a partner: Cork County Council, Ireland

Cork County Council was delighted to host the second meeting of the elighthouse partnership. Cllr Alan Coleman, Vice President of Energy Cities, welcomed international partners to Cork and told participants that while Cork County Council has led the way in both promoting and implementing energy efficiencies, the Council is always seeking new and innovative ways to deliver on energy efficiencies and utilise renewable energies.

[Read More](#)



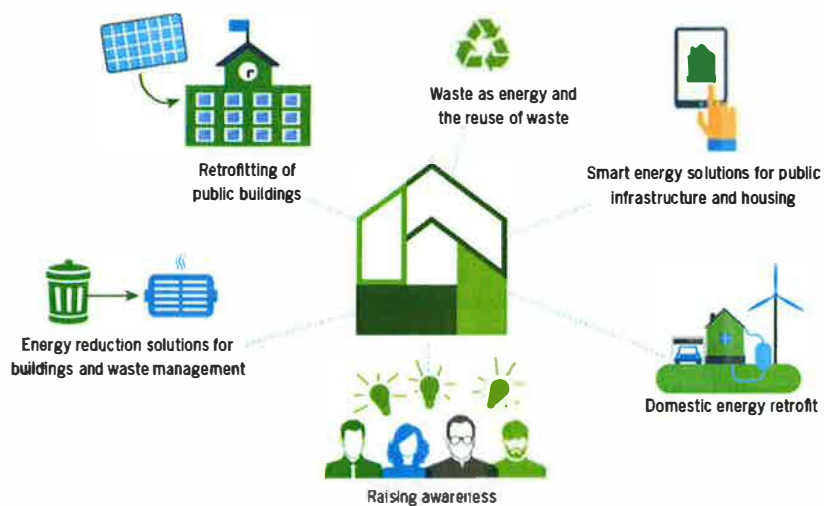
Cork County Council achieve ISO 50001

Cork County Council is fully certified by Certification Europe to ISO 50001, the international standard for energy management. In receiving this award Cork County

energy standard.

[Read More](#)

Key Components of the Project



For more details about elighthouse or to get in touch with the partners please see the [elighthouse brochure](#)

[Read More](#)



Expected Outcomes of elighthouse

- Procedures to increase energy efficiency in municipal buildings
- Monitoring procedures to track the effectiveness of actions
- Procedures for increasing energy efficiency in the construction of new buildings and the retrofitting of the old ones

[Visit Website](#)

Copyright © 2017 eLighthouse, All rights reserved.

The elighthouse project will support actions that increased energy efficiency in buildings and increase the uptake of renewable energy, thus decreasing carbon dioxide emissions. It is co-financed by the European Union through the Northern Periphery and Arctic Programme

Our mailing address is:

eLighthouse
Cork County Council
Floor 2 | County Hall | Carrigrohane Road
Cork, Cork T12 R2NC
Ireland

[Add us to your address book](#)

Want to change how you receive these emails?

You can [update your preferences](#) or [unsubscribe from this list](#)

MailChimp