



eighthouse.eu

Newsletter

November 2017

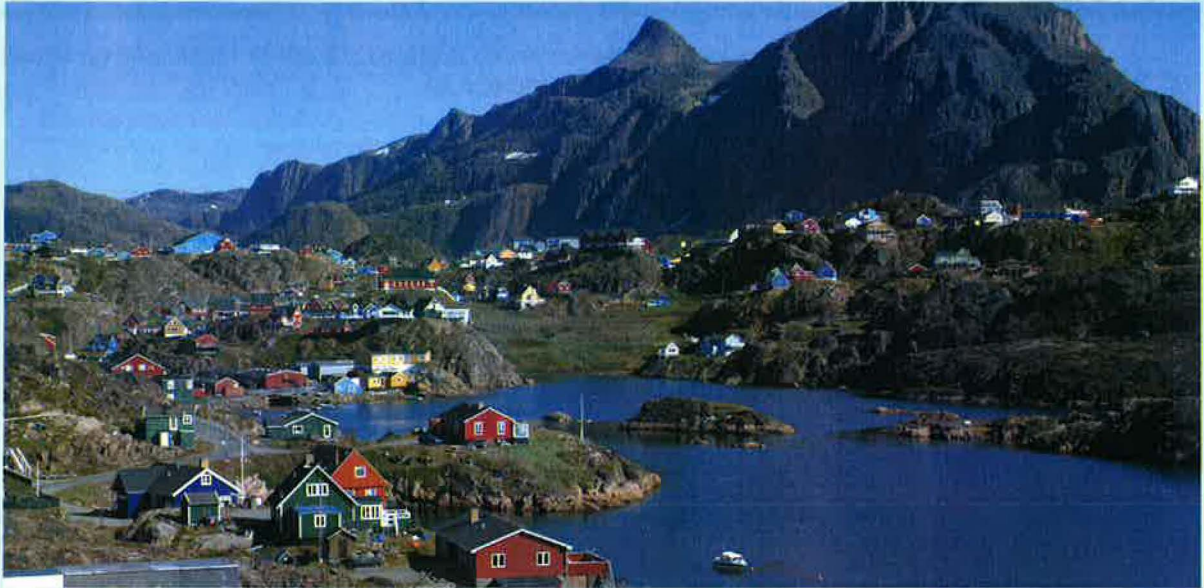


**Northern Periphery and
Arctic Programme**
2014-2020



EUROPEAN UNION

Investing in your future
European Regional Development Fund



elighthouse activities in Sisimiut, Greenland

ARTEK in Sisimiut, Greenland have been busy in delivering elighthouse activities to their local region. ARTEK conducts research, innovation and research-based consultancy in arctic technology.

[Read More](#)



Energy Monitoring and Analysis of a Passive house Preschool, Umeå, Sweden

Hedlunda pre-school is one of the few public building in northern Sweden, which is certified as a passive house. The building is estimated to use about 10-15% heating energy of a "normal" building. The building is not yet systematically evaluated and thus our task is to study its' energy performance. In this project, a detailed energy monitoring and evaluation of the building will be carried out.

[Read More](#)



Energy Efficiency Agreement reward given to the City Of Oulu

The City of Oulu was provided with an honorable mention during the Energy Efficiency Agreements 20 year's gala seminar. Acknowledgment was given to the long-term work through the Energy Efficiency Agreements 2008-2016. The City of Oulu was among the first cities in Finland to join the Energy Efficiency Agreement and to set a 9% energy savings target.

[**Read More**](#)



Energy efficiency activities in the City of Oulu

In Oulu, Finland an "Energy Efficiency Training in Repair Building" seminar was held on the 1st November 2016 at Oulu University of Applied Sciences premises. The training was organized by Ari Järvinen and Jouni Heiskanen who represented a company named [lamit.fi](http://www.lamit.fi) (www.lamit.fi). Lamit provide energy services, such as energy calculation training, and their aim is to reduce energy consumption in buildings.

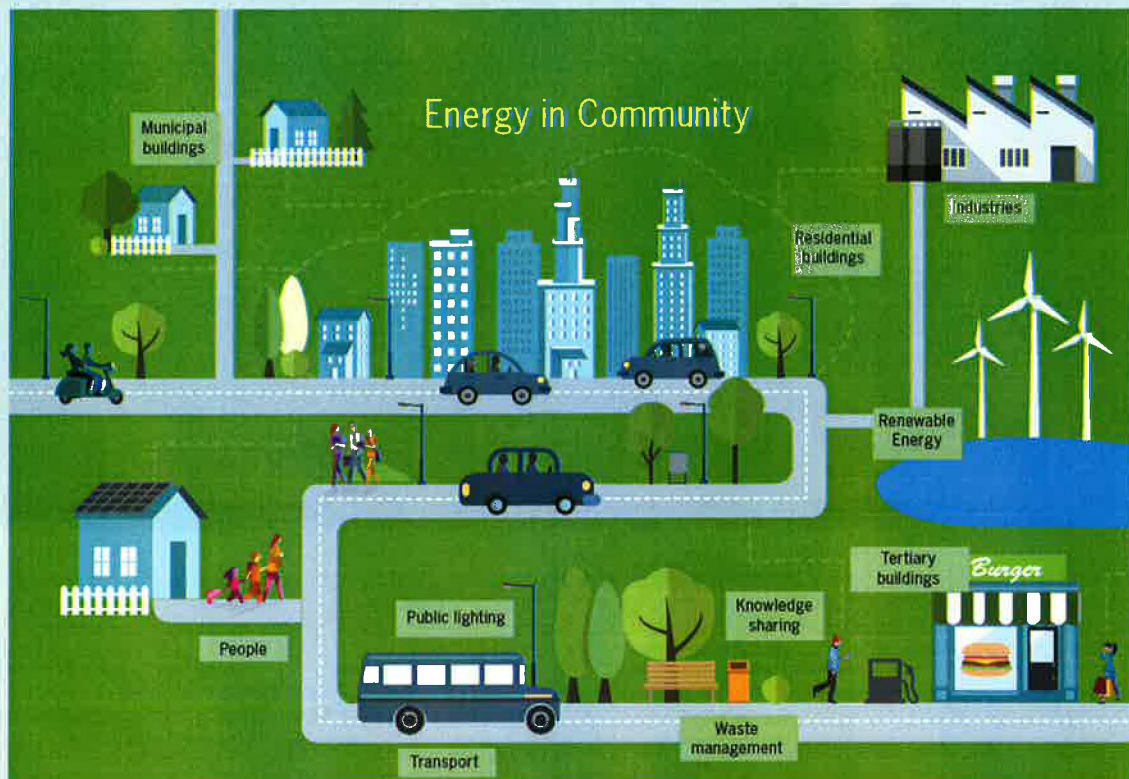
[Read More](#)

Key Components of the Project



For more details about elighthouse or to get in touch with the partners please see the [elighthouse brochure](#)

[Read More](#)



Expected Outcomes of elighthouse

- Procedures to increase energy efficiency in municipal buildings
- Monitoring procedures to track the effectiveness of actions
- Procedures for increasing energy efficiency in the construction of new buildings and the retrofitting of the old ones

WATCH OUR VIDEO



uptake of renewable energy, thus decreasing carbon dioxide emissions. It is co-financed by the European Unions European Regional Development Fund (ERDF) through the Northern Periphery and Arctic Programme.

Want to change how you receive these emails?

You can [update your preferences](#) or [unsubscribe from this list](#)

This email was sent to Darragh.Osuilleabhain@corkcoco.ie

[why did I get this?](#) [unsubscribe from this list](#) [update subscription preferences](#)

eLighthouse · Cork County Council · Floor 2 | County Hall | Carrigrohane Road · Cork, Cork T12 R2NC · Ireland

MailChimp